



JumpStar™

Assembly Instructions



JumpStar Rectangular Enclosure

Trampoline Specifications:

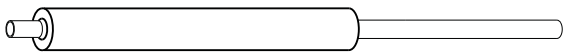
- 7ft(214cm)x10ft(304cm)
- 8ft(244cm)x12ft(366cm)
- 9ft(274cm)x14ft(426cm)

ASSEMBLY INSTRUCTIONS FOR PROTECTIVE NET

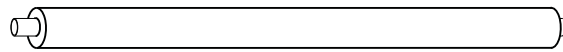
1. PACK CONTENTS :

Reference Number	Description	Quantity		
		7' x 10'	8' x 12'	9' x 14'
1	LOWER STEEL TUBE	8	8	8
2	UPPER (PADDED) STEEL TUBE	8	8	8
3	BRACKET	16	16	16
4	SCREW SET	16	16	16
5	ENCLOSURE NET	1	1	1

2. DIAGRAMS FOR PARTS:

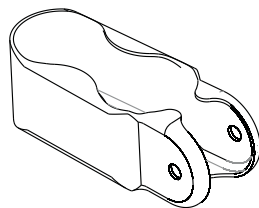


1. LOWER STEEL TUBE

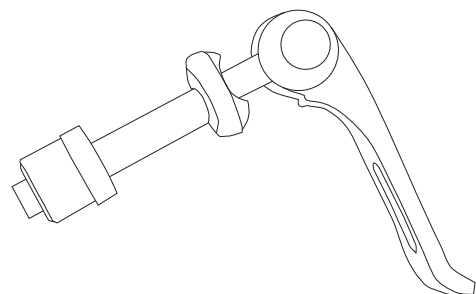


2. UPPER (PADDED) STEEL TUBE

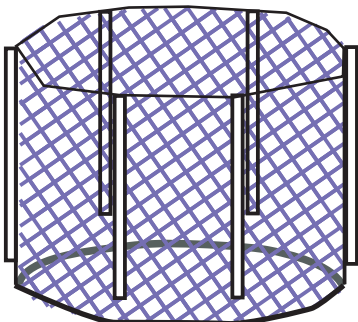
(these tubes have a padded sleeve for protection of user in case of impact in use – please do not remove!)



3. BRACKET



4. SCREW SET



5. ENCLOSURE NET

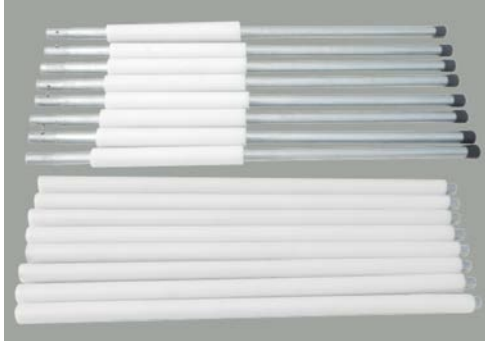


WARNING

This enclosure is to be used only in connection with certain trampolines. Read and follow all warnings and instructions.

7X10ft / 8X12ft / 9X14ft SAFETY ENCLOSURE ASSEMBLY

- Refer to PART LIST for identification of parts
- Warning: 2 adults in good physical condition are required for the following assembly. Wear proper and maintain balance to prevent a fall. Failure to follow all instructions and warnings exactly may result in serious injury.



Step1

Taking out all steel tube, ensure that all tube padded with foam.



Step2

Using Lower steel tube (#1) joint to upper (padded) steel tube (#2)



Step3

Put the Enclosure net #5 to the trampoline



Step4

Inserting the Enclosure Pole (#1+#2) to Enclosure sleeve.



Step5

Repeat Step 4, insure all Enclosure pole inserting to Enclosure sleeve.



Step6

Using the Bracket (3#) and Screw set (#4) Lock the Enclosure pole to Trampoline leg.



Step7

Repeat Step6, Lock the Enclosure pole to Trampoline legs one by one.



Step8

Repeat Step6, Lock the Enclosure pole to Trampoline legs one by one.



Step9

Repeat Step6, Lock the Enclosure pole to Trampoline legs one by one.



Step10

Repeat Step6, Lock all of 8pcs Enclosure pole to Trampoline legs.



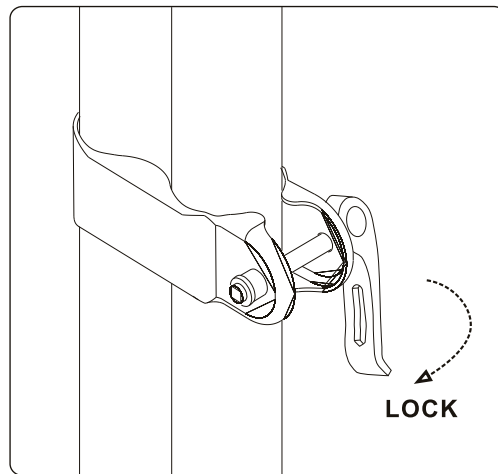
Step12

Finish installing net, Working around trampoline and enclosure, work net down on poles, after net is stretched over poles and bottom of net is resting on pads, attach the hook to D-Ring at the button of the pad.



Step 12

Safety Enclosure assembly complete.



How to lock the Bracket

IMPORTANT WARNING

You should go back now and stretch all attachment hooks tight and double check to see whether you have fastened the jigs use the screw sets or not , so the safety net stands stiff. Otherwise, the safety net will not function properly . Then finish assembling.

WARNING:

1. Adequate overhead clearance is essential. A minimum of 24 ft, and a clearance of 2m around the perimeter of the trampoline. from ground level is recommended. Provide clearance for wires, tree limbs and other possible hazards.
2. Lateral clearance is essential. Place the trampoline and trampoline enclosure away from walls, structures, fences, and other play areas. Maintain a clear space on all sides of the trampoline and trampoline enclosure.
3. Place the trampoline and trampoline enclosure on a level surface before use.
4. Use the trampoline and trampoline enclosure in a well-lighted area. Artificial illumination may be required for indoor or shady areas.
5. Secure the trampoline and trampoline enclosure against unauthorized and unsupervised use.
6. Remove any obstructions from beneath the trampoline and trampoline enclosure.
7. The trampoline enclosure is only to be used as an enclosure for a trampoline and the trampoline must be of the appropriate size as covered by the specific enclosure.
8. The owner and supervisors of the trampoline are responsible for making all users aware of practices specified in the use instructions.

WARNING:

1. DO NOT attempt or allow somersaults on the trampoline. Landing on the head or neck can cause serious injury, paralysis, or death even when landing in the middle of the bed.
2. Do not allow more than one person inside the trampoline enclosure. Use by more than one person at the same time can result in serious injuries.
3. Use trampoline enclosure only with mature, knowledge supervision. Care and Maintenance Instructions: Inspect the trampoline enclosure before each use and replace any worn, defective or missing parts. The following conditions could represent potential hazards:
 - a. Missing, improperly positioned, or insecurely attached barrier or enclosure support system (frame) padding and pole caps.
 - b. Punctures, frays, tears or holes worn in the barrier or support system (frame) padding.
 - c. Deterioration in the stitching or fabric of the barrier or support system (frame) padding.
 - d. Bent or broken support system (frame).
 - e. Sagging barrier.
 - f. Sharp protrusions on the support (frame) or suspension system.

IMPORTANT

Inspect the trampoline and enclosure before each use. Disassemble the trampoline and/or enclosure immediately if any unsafe condition exists.

Do not allow use of the trampoline or enclosure until the hazard has been corrected.

WARNING

ANCHOR YOUR TRAMPOLINE & ENCLOSURE -

If you live in an area with the potential for high winds or gusts of wind we advise that you anchor your trampoline and enclosure system firmly to the ground by the top rail of the trampoline. Your trampoline and enclosure could be carried off by a strong wind and cause damage to the unit itself or cause other property damage.

After assembling and inspecting your trampoline and enclosure, and before permitting its use, ensure that the trampoline is on a firm, level surface and that every leg is in contact with and firmly supported by this surface. It is the responsibility of the owner and/or supervisor of this trampoline to ensure unit is correctly assembled, placed and maintained.

Enjoy your trampoline!



JumpStar Trampolines Pty Ltd ABN 99 000 000 000 Unit
4/29 Mcintyre Way, Kenwick WA 6107 Email:
info@jumpstar.com.au
www.jumpstar.com.au